

Neighbor News



April 2004

YOUR NEIGHBORHOOD-- Douglas Park online: <http://www.arlingtondpca.homestead.com>

Activities Reflect Interest in Gardens and Earth Day

Arlington County's Solid Waste Division has provided details on how to dispose of many household waste items, in addition to winter's damaged trees and branches—see p. 5 for details. And note that many of your neighbors are involved in planting trees and swapping plants, working in gardens, cleaning up neighborhoods and waterways, and generally celebrating the season. Join in!

Sat., April 17, Plant Swap at Randolph School, starting at 8:30 am
There will be a plant swap and sale at Randolph Elementary School from 8:30 am–1 pm. Bring your extra plants to trade or donate for sale. All proceeds benefit schoolyard habitat projects.

Nature walks will be conducted at 11:00 and 11:30 on the Doctor's Run Trail. At noon, there will be a tree dedication that will be followed by the sale of pupusas and hot dogs for lunch. Randolph is located at 1306 South Quincy St. in Arlington, near the intersection of Columbia Pike and S. George Mason Dr.

Earth Week Tree Planting Initiative in Douglas Park

On Sat., April 17, you can help out with a "Growing Native" tree planting in Douglas Park, sponsored by the Potomac Conservancy and the Potomac Watershed Partnership, and the Arlington Department of Parks and Recreation, from 11 am–4 pm at the park. Volunteers will plant trees, pick up garbage, remove invasive vines and repair trails.

Starbucks has generously pledged to donate \$10 per volunteer hour to the Potomac Conservancy to support this project as part of their Earth Month Make Your Mark Program. Fun for the whole family—Come for the entire day or just a few hours. For information, see the Web sites. www.growingnative.org or visit the Potomac Watershed's site, www.potomac.org/action/riverup/riverupdates/ru_0404.htm Coffee and snacks will be provided by Starbucks. To volunteer, RSVP to Bryan Seipp, seipp@potomac.org. > 4

Spring Events



¡Es hora de hacer la limpieza de primavera! Cómo eliminar casi todo tipo de basura > 6

Neighborhood Day, May 8 Residents Plan Festivities—Old-Fashioned Games and Cook-Out in Douglas Park

Mark Sat., May 8, on your calendar to celebrate Neighborhood Day in Douglas Park on S. Quincy St. Several annual Neighborhood Day events will take place around the county, including the Arlington Community Hero Awards, the Fort Myer Military Community Twilight Tattoo Ceremony, the Animal Welfare League's Walk for Animals, and, the Neighborhood Day Parade, on Wilson Blvd. at 2pm. An updated schedule of events is available at www.civfed.org/neighday.htm, or check local news.

DPCA will hold a celebration in Douglas Park, at the corner of Quincy and 16th Sts. Everyone is invited! Here's the schedule:

4 pm—Children's games in Douglas Park

6 pm—Hot dog and marshmallow roast

NCAC Rep John Snyder will

explain how to play Kick the Can, a favorite old-fashioned game, to all in attendance. Young and old are invited to participate. While the kids play, grown-ups can catch up with each other.

Bring lawn chairs, drinks (non-alcoholic), munchies, and bug spray. We'll have a hot dog and marshmallow roast

around 6 pm. Please contact me if you have a croquet set, and we can have a few rounds of this as well.

If you can help, contact Rebecca at 553-4140.



New trees have been planted on the 16th St. side of Douglas Park. Tree "whips" (tiny saplings) will be given away there on Neighborhood Day.

INSIDE SCOOP

- May 18, DPCA general membership meeting 2
- What DPCA accomplished this past year—wow! 2
- Open house April 14—18th St. traffic calming plans. ... 4
- Columbia Pike: Big development plans 8
- La Cruz Roja ofrece servicios gratis de traducción de Español-Inglés 10

Douglas Park Civic Association, Arlington, VA

Meeting Calendar: The DPCA executive committee has scheduled regular meetings on the third Tuesday of the month, 7:30pm. They will usually be held at the fire station, 1900 S. Walter Reed Dr.

April 20: *executive committee* June 15: *executive committee*
 May 18: general membership July 20: general membership

Douglas Park Executive Committee (All area codes 703)

President: Rebecca Krafft, 553-4140, rebecca_krafft@hotmail.com
 Vice president: Mitch Opalski, 553-1942, mopalski@aol.com
 Treasurer: Linda Dye, 979-6276, wwwcdyels@starpower.net
 Secretary: John Roman, 892-2225, roman3606@comcast.net
 At Large: Bardie Romano (Crime and Safety Committee), 920-0769, bardie_1@netzero.com
 Bob Cowan, 979-3081, bcowan@earthlink.net
 Lane Nemirow, 271-1111, lane@pop.net,
 Randolph liaison: Rita Wiggins, 521-4725, rmwiggins@aol.com
 Parks committee: Marty Nielsen, 979-8777, mnielsen@erols.com
 Traffic committee: vacant (Bob Cowan, acting chair)
 Neighborhood Conservation Advisory Commission Delegates:
 John Snyder, 892-2887, jvsnyder54@comcast.net;
 Bardie Romano, 920-0769, bardie_1@netzero.com

Neighbor News--

Advertising: Mitch Opalski, 553-1942, mopalski@aol.com
 Editor/layout: Dawn Leland, 979-4480, dmleland46@hotmail.com
 Distribution: Jamie Daly, 521-4567, jamie22204@yahoo.com
 Webmaster: Carol Freysinger, 703-271-0431, c.freysinger@verizon.net

Civic Federation Delegates--

Linda Dye 979-6276, wwwcdyels@starpower.net
 Rebecca Krafft 553-4140, rebecca_krafft@hotmail.com
 John Roman 892-2225, roman3606@comcast.net

Advertising rates

1/8 page (card) \$25	Full page, \$250
1/4 page, \$60	Sponsorships and discounts available
1/2 page, \$100	—call Mitch for information.

SEND check, payable to DPCA, and ad information to Mitch Opalski, 3129 12th St S., Arlington, VA 22204.

MEMBERSHIP FORM

Douglas Park Civic Association

YES! Count me in!
 Enclosed is my payment of \$10.00.
 [Dues year runs from March to February.]
 YES, I'm donating the additional amount of \$ _____
 A CHECK FOR THE
 TOTAL IS ENCLOSED, \$ _____

[PLEASE PRINT]
 Name _____
 Street address _____
 Apt. # _____ Arlington, VA 22204
 Home phone, 703- _____
 E-mail _____

YES, I'd like to volunteer for:
 the 4th of July picnic election day bake sale
 holiday fund drive write articles for newsletter
 call me any time and I'll see if I can help

MAIL CHECK payable to DPCA, with this FORM to:
 Treasurer, DPCA, 3621 S. 14th St., Arlington, VA 22204
 Thank you!

PRESIDENT'S MESSAGE

Some of the Many Reasons to Join DPCA

This issue of the newsletter contains a membership form to join the Douglas Park Civic Association. DPCA is a community group that works to improve our community. Membership is only \$10, and everyone is welcome to join. The more people who join, the stronger a neighborhood we are. Our neighborhood has over 1,000 households. In recent years, fewer than 200 people have sent in membership dues. I'd like to see that number go way up. Here's just a partial list of what the civic association has done over the past year:

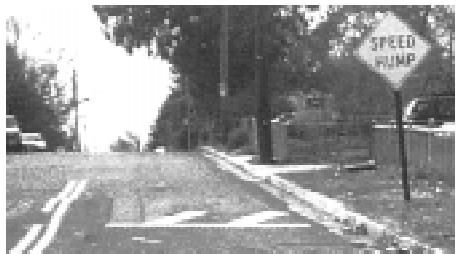
- 1. Left Turns at Columbia Pike and Glebe Road**
 Civic association leaders have dogged the county for two and a half years to have the left turn lanes at all four approaches to the Columbia Pike and Glebe Road intersection built. Led by past president Reid Goldstein and me, with the unflagging efforts of county board member and neighbor Chris Zimmerman, these lanes are now being constructed.
- 2. Creation of permanent night-time parking zone.**
 Zone 21, approved by the county in May and implemented in fall 2003, has alleviated the ongoing night-time parking problems adjacent to the apartments on Four Mile Run.
- 3. Fourth of July Celebration**
 This year, as in the past 21 years, the civic association will sponsor the neighborhood's biggest community celebration, the Fourth of July parade and picnic. Plans for this year's event are already under way; your dues will help offset the cost of live music, amusements, prizes, and food.

4. CERT
 A Community Emergency Response Team (CERT) has been formed and trained by the county fire department to respond to our neighbors' medical and safety needs in the event of a major disaster.

5. Involvement in Local Planning
 Civic association volunteers greatly influenced the development plans that were approved for Glebe Rd. at 13th St., south of the post office, and they participate in Columbia Pike planning and on countywide commissions. Douglas Park's name is known and respected within county government as a result.

6. Improvements between Quincy St.–Doctor's Run and Douglas Park
 Our parks committee is working with the county to install trash cans along the path by Randolph School and to post signs. The committee has also helped with stream clean-up, invasive plant removal, and new plantings at Douglas Park.

7. Traffic Calming on Monroe Street.
 As a result of civic association efforts, traffic calming measures have been put in place on Monroe Street (to be com-



pleted this spring). They have been approved for Quincy Street and are being considered for 18th Street.

8. Other Works in Progress

Civic Association work is ongoing. Your neighbors are working on other projects, which are in various stages. These include working to get a traffic signal at Glebe Rd. and 12th St. near the post office and Carlyle streetlights on 14th St. between Glebe and Walter Reed.

9. Community News

Through the newsletter you are reading, the Douglas Park Web site (www.arlingtondpc.com), and our email chat list, we help neighbors keep informed. We also hold monthly meetings that all are welcome to attend.

This is just a partial list of accomplishments and ongoing efforts. By sending your membership dues and volunteering to help, you can play a part in keeping our neighborhood safe, vibrant, and beautiful. Please send in your dues today.

—Rebecca Krafft

Trees and Transport—Progress on the Pike The March DPCA meeting

Pike Initiative Will Make Life Easier

Greg Walker, director of the Pike Transit Initiative described the plans for the Pike intended to make commuting easier and walking a pleasure. Projects include more trees, better parking, clean fuel-powered vehicles, and new communication technologies. Walker was accompanied by Metro staff Robin McElhenny, Kristin Haldeman, and Rob Johnson, who all gave their time to meet with us. There will be more community meetings held to encourage citizen input. To keep up, call 703-892-2776, or see the Web site, www.piketransit.com.

Tree Damage Can Translate to Big Money

If hurricane Isabel or other storm damage gave you a different perspective on trees, then you should have been there to hear what Tom Tyler had to say. He's the county extension agent on care and selection of trees, and he discussed some ways to spot troubled trees:

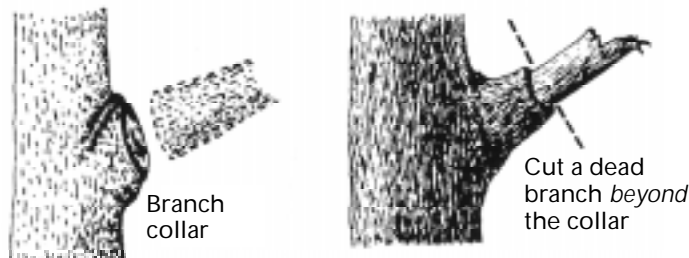
- Big roots above ground, especially with cracks or decay.
- Mushrooms growing on the bark.
- Trees with v-shaped trunks are susceptible to damage.
- Gashes in the bark that indicate damage and invasive pests or disease. The larger it is, the less likely it is to heal.

Tom noted a few trees to avoid planting—alanthus, black locust, and bradford pears, silver maple, some red maples, and Norway maples, among others. Many of these don't have root systems that adapt well in an urban environment. And he discussed good things to do to ensure healthy trees and plants.

- Water a new tree with 10 gallons a week.
- Create a 2-3-inch high "donut"—not a mound—of mulch, around the tree as far out as you can. Eighty-five percent of the roots are in the top 20 percent of the soil and mulch will hold in moisture.
- Trim off dead branches; leave an inch stub beyond the "collar" where it joins the tree—it helps the cut heal.



Tom Tyler prepares his slide show and makes a point about the destructiveness of English ivy, an invasive plant, with a big sample that shows how it strangled a tree. Seated at right is long-time resident and active community member Sedge Moss.



The kindest cuts

- Trim branches that might interfere with power lines or cause other hazards. But trim evenly, so the tree is balanced
- Careful thinning of trees allows light penetration and air movement; it reduces weight and heavy limbs; and can help avoid toppling during high winds.
- Prune before the spring growth flush starts, if possible.
- Don't "top" trees; this damages form and structure.

Tom gave examples of good trees to plant, including black gum, sycamore, and dawn redwood, among others.

Resources: Master Gardeners hotline, 703-228-6414.

Find a certified arborist from the Web site for the International Society of Arboriculture, www.goodtreecare.com.

Attend plant clinics: Thurs., 7-9 pm, April 15-Sept. 7, at Central Library; Mon.-Fri., 9-12 am, at Fairlington Comm. Center, 3308 S. Stafford St.; Sat., 8-11 am, April-Nov., the Farmers Market, N. Courthouse Rd. & 14th. —Dawn Leland

March Stream Cleanup Thanks

Thanks to Nancy Theodore, of the Parks Committee, who led the clean-up of the stream in Douglas Park on March 13. With able help from Sabrina Lintz, the two of them managed to clean most of the trash from the stream, except for the tires that are half buried in the streambed. Efforts to restore the stream will continue in the year to come.

AROUND YOUR NEIGHBORHOOD

ABC Hearing on Beer and Wine Permit for Hi-Cue Billiards; Civic Association Opposes License

In spring 2002, Hi-Cue Billiards, in the Food Star Shopping Center, applied for a license to serve beer and wine. Hi Cue has been the site of three homicides during the 1990s. At the time of the application, the civic association unanimously opposed the application, as did all neighboring civic associations, the chairman of the county board and the chief of police. The application disappeared from view, but was not actually ruled on. DPCA recently learned that it is being forwarded for decision. The Virginia ABC will hold a hearing on Hi-Cue's application on Monday, April 19, 2004, at 2:00 p.m. at the Alexandria Regional Office, 501 Montgomery Street. To add your name to a petition opposing the license, contact Evalyn Carter, 703-920-5168, evalyncarter@aol.com. —Rebecca Krafft

Traffic Calming for 18th St., Open House April 14

Arlington County Transportation Department has identified S. 18TH St. between S. Quincy St. and Walter Reed Dr. as eligible for a traffic calming speed hump project. Residents are invited to an open house on Wed., April 14, to discuss the plans.

Residents are concerned about speeding and safety along this segment of roadway. DPCA's neighborhood traffic calming committee requested assistance to resolve this issue. The roadway is classified as a neighborhood-minor street and carries 452 vehicles per day; has 85% of the cars traveling at or below 32 mph.



The view above shows the approach to 18th St. heading south on Monroe St. toward Walter Reed Drive. Stop signs will be moved from Monroe to 18th St. so that traffic on Monroe will no longer stop. This intersection is a problem because many drivers merely slow and don't look, running the stop signs. There have been a several accidents.

For more information about the Arlington Co. Neighborhood Traffic Calming Program see www.co.arlington.va.us/dpw/planning/ntc/index.htm.

If you have questions about the project, contact Susan Finotti, Arl. Dept. of Transportation, 703-228-3575. Here's the schedule for the process:

- April 14, 7pm: Open house, Fire Station No. 9
- April 14–May 14: Petition distribution, signing,
- May 14: Petitions due back to county staff
- June 16: NTCC funding consideration meeting
- July 10: County Board funding meeting

Douglas Dogs, Neighborhood Dog Owners Group, Meets April 19

Join other dog-owning neighbors on Mon., April 19, 7pm, at the firehouse, 19th & Walter Reed. The group will hear from an animal control warden and an Arlington Co. Parks and Recreation representative, and discuss the community canine area at Ft. Barnard on S. Walter Reed.

Yard Sale at Jefferson Middle School, April 24

On Sat., April 24, the Jefferson PTA Yard Sale will be held from 10 am–2 pm in the Jefferson Middle School parking lot. Donations of goods for the sale can be made at the school or can be dropped off at the Dunbar–Hill home, 1700 S. Pollard St. For more information or to arrange a donation, call Debbie Hill at 703-979-9122.

MOMS Club of S. Arlington Meets May 10

Moms are invited to the Mon., May 10, 9:30 am gathering at the Fairlington Community Center. Children are welcome. The MOMS Club of S. Arlington (Moms Offering Moms Support) is a non-profit support group for at-home mothers living south of Rt. 50 in Arlington. The group meets weekly > 7



J.W. Lamberson contractor • Jeff Curcio architectural designer

Combining quality general contracting
and innovative design solutions

703-598-1146 • 703-553-0130

Residential Renovation & Remodeling
Single & Multi-story additions
Bathrooms • Kitchens • Basements
Roofing and siding
Garages



It's Time for Spring Clean Up! How To Dispose of Just About Anything

Arlington County's Solid Waste Division Customer Service Call Center is open Mon.-Fri., 8 am-5 pm, 703-228-6570. It is the central point for all pick-up requests and questions.

Regular Refuse Collection

Residents are supplied a 96-gallon refuse cart. There is a 200-lb. limit on the contents and a 50-pound limit for plastic bags and personal cans. Paper bags and cardboard boxes are not acceptable containers for refuse collection.

Unacceptable refuse items*

The Arlington County Code (Chapter 10) prohibits County crews from collecting such items as:

Explosives	Asphalt
Propane, Helium, other pressurized tanks	Concrete
Liquids, including paint	Ceramic tile
Hazardous waste	Rocks, Soil, Sand
Fire extinguishers	Unbundled lumber
Bricks/masonry block material	Contractor building

*Some of these items may be disposed of at either the Household Hazardous Waste Center or at the Inert Materials Drop-Off Center. Call 703-228-6570 for details.

Special Pick-Up

Brush, appliance, metal and miscellaneous items

Collections for unbundled brush and appliances are made on the regular refuse collection day on alternating weeks. You must make a special pick-up request by calling 703-228-6570. Items must be placed at the curb, away from parked cars, utility poles and not under any low wires or tree limbs. Approximately 25 feet clearance above the items as well as clear access around the items is needed to ensure pickup.

Branches for brush collection must be less than 18 inches in diameter and less than 10 feet long. There is no charge for brush pick up, but there is a fee for some appliances and bulky metal items. The fee for appliances is \$20 for the first item and \$10 for each additional item.

Partial list of chargeable items.

Washer/dryer	Humidifier/dehumidifier	Gas grill
Stove/oven	Refrigerator/freezer	Microwave
Air conditioner	Metal file cabinets	Water heater
Metal shed parts	—3 or more drawers	
Riding or motorized lawn mowers		
Large pieces of metal/chain link fencing		

Household items that are too bulky to be bagged, bundled, or put in the refuse cart (e.g., furniture or home construction debris) must be scheduled for special pick-up. Furniture must fit into the back of a refuse vehicle without causing damage to the vehicle. Non-metal construction debris, such as countertops and cabinets, must be less than four feet in length and weigh less than 150 pounds. Items other than furniture or bulky items must be placed in containers, bundles or bags not exceeding 50 pounds. Bundles (lumber, brush, carpet) can not exceed four feet in length. Nails in boards must be removed or hammered flat.

Car batteries are collected curbside; call 703-228-6570 to schedule a pickup.

Recycling

Materials accepted for curbside collection

Glass, metal and plastic containers (#1, 2) with narrow necks only. Containers must be rinsed clean, with caps removed. Newspapers, magazines and mixed paper material must be bundled with twine or placed in paper grocery bags. Place material next to recycling bin. Do not place loose paper in recycling bin as this will cause your bin to be rejected. Corrugated cardboard must be flattened and reduced to less than 3 feet by 3 feet. Materials can be loose or tied in bundles no thicker than 6 inches.

Arlington currently operates two recycling drop off centers, one at Columbia Pike and S. Four Mile Run Dr, and the other at 530 N. Quincy St (between Wilson Blvd. and Glebe Rd).

Spring Yard Waste Pick-up

Citizens can recycle their yard waste each spring during the month of April. Place materials in either personal rigid trash cans or biodegradable paper bags that are available from the County. Yard waste is collected one business day after regular refuse collection. Acceptable materials include leaves, twigs, brush, and shrub trimmings, vines, flower and vegetable bed debris, yard raking, leaves acorns, pine needles and seedpods. Items such as dirt, rock, brick, concrete, asphalt, sand sod, and ceramic tile will not be collected.

Inert Materials/ Scrap Metal Drop-Off

The drop-off facility is located at the Arlington Co. Trades Center, 4300 S. 29th St. Hours are Mon.-Fri., 8 am-2:30 pm by appt. It is also open on the first Sat. of each month from 8 am-4:30 pm, no appointment is necessary.

Inert material accepted

Bricks	Sand, Sod, Soil (earth)
Masonry Block	Ceramic tile (no wire or metal)
Asphalt	Concrete (no wire or metal)
Rocks	Loose Leaves (Jan.-Oct. only)

Household hazardous waste disposal

Household hazardous wastes are products present in the home that are flammable, corrosive, poisonous or potentially hazardous if improperly handled. Examples include:

Flammable paint products	Garden chemicals	Antifreeze
Small pressurized and propane tanks	Paint thinners	Brake fluid
Cleaners and solvents	Automotive fuel	Lubricants
	Insecticides	

These products should not be mixed with non-hazardous refuse. Commercial or business wastes are not accepted. The household hazardous waste facility is located at the water pollution control plant at 3402 S. Glebe Rd. Use the Fern St. entrance on the left. Weekday hours by appt. only. Call 703-228-6832 during business hours to schedule and for guidance on proper disposal of household hazardous wastes. Sat. hrs. 9 am-3 pm. A scheduled appointment is not required to drop off materials during weekend business hours; however citizens are encouraged to confirm acceptability of their HHW materials before arrival at the facility.

¡La limpieza de primavera! Cómo eliminar casi todo tipo de basura

El Centro de Llamadas de Servicio al Cliente del Condado de Arlington está abierto de lunes a viernes desde las 8 am–5 pm en el 703-228-6570. El Centro de Llamadas de Servicio al Cliente es el punto central para todas las preguntas y peticiones para recolección.

Recolección regular de basura

Los residentes tienen un carrito de basura de 96 galones. Hay un límite de 200 libras en los contenidos y un límite de 50 libras para fundas de plástico y basureros personales. No se acepta el uso de fundas de papel y cajas de cartón para la recolección de basura.

Artículos de basura no aceptables*

El Código del Condado de Arlington (Capítulo 10) prohíbe que los trabajadores del Condado recolecten artículos como:

Explosivos	Ladrillos/albañilería	Basura peligrosa
Asfalto	Rocas, tierra, arena	Tanques de gas
Cemento	Extintor de incendios	Madera suelta
Cerámica	Líquidos, incluyendo pintura	

Materiales de construcción de constructoras

*Algunos de estos artículos pueden ser eliminados en el centro de basura peligrosa de casa o el centro de materiales Inertes. Llame al 703-228-6570 para detalles.

Recolección especial

Ramas de árboles, electrodomésticos, artículos misceláneos y de metal— Usted tiene que pedir una recolección especial; llame al 703-228-6570. Los artículos deben estar en la acera de la calle, alejados de carros estacionados, y no debajo de alambres o ramas de árboles. Es necesario tener aproximadamente 25 pies libres por encima de los artículos y acceso libre alrededor de los artículos para asegurar que puedan ser recolectados.

Ramas de árboles deben ser menores de 18 pulgadas de diámetro y menores de 10 pies de largo. No hay cargo para recolectar ramas de árboles, pero hay un cargo para algunos electrodomésticos y artículos de metal que son muy grandes. El cargo para electrodomésticos es \$20 por el primer artículo y \$10 por cada artículo adicional. Abajo hay una lista parcial de los artículos que pueden llevar cargo.

Humidificador/deshumidificador	Lavadora/secadora
Refrigeradora/congeladora	Estufa/horno
Cortacésped motorizado	Parilla de gas
Cortacésped para montar	Aire acondicionado
Archivero metal, 3 ó más cajones	Microondas
Pedazos grandes de cerca de metal	Partes de cobertizo de metal

Usted tiene que llamar para pedir una recolección especial para artículos de casa que sean demasiado grandes para ser atados o puestos en el carrito (por ejemplo: muebles o materiales de construcción). Los muebles deberían entrar en el vehículo de basura sin dañar el vehículo. Los materiales de construcción que no son metales deberían medir menos de cuatro pies de largo y pesar menos de 150 libras. Los artículos que no son muebles o son muy grandes deberían estar en los recipientes o en fundas que no excedan las 50 libras. Atados de madera, ramas de árboles o alfombra no deberían exceder los cuatro pies de largo. Hay que quitar clavos de tablas o maderas. Se recolectan baterías de automóviles en la acera de

la calle, por favor llame al 703-228-6570 para pedir una recolección.

Reciclaje

Materiales aceptados para recolección en la acera: Artículos de vidrio, metal o plástico (#1 y #2) sólo con cuello pequeño. Los artículos deben estar lavados y sin tapas. Los periódicos, revistas y papel mezclado deberían estar atados con hilo o puesto en fundas de papel. Ponga el material al lado del recipiente de reciclaje. *No ponga papel suelto* en el recipiente de reciclaje o no se le aceptará. El cartón debería estar aplastado y reducido a no más de 3 pies por 3 pies. Los materiales pueden estar sueltos o atados en grupos de no más de 6 pulgadas de ancho. Actualmente Arlington opera dos centros de reciclaje donde usted puede dejar materiales para ser reciclados, uno en Columbia Pike y S. Four Mile Run Dr., y otro en 530 N. Quincy St (entre Wilson Blvd. y Glebe Rd).

Recolección de primavera de basura de patio

Los ciudadanos pueden reciclar su basura de patio cada primavera durante el mes de abril. Ponga los materiales o en su basurero personal o en fundas de papel biodegradables, que están disponibles en el Condado. La basura de patio es recolectada un día laboral después de la recolección regular de basura. Los materiales aceptables incluyen hojas, ramitas, césped, plantas, escombros de jardines, etc. Artículos como tierra, rocas, ladrillos, cemento, asfalto y cerámica no serán recolectados.

Depósito de materiales inertes y chatarra metálica

La facilidad está ubicada en Arlington Co. Trades Center, 4300 S. 29th St. Las horas son de lunes a viernes desde las 8 am–2:30 pm, previa cita. La facilidad también está abierta el primer sábado de cada mes desde las 8 am–4:30 pm; no es necesario tener una cita.

Materiales inertes aceptados

Ladrillos	Arena y tierra	Albañilería
Rocas	Cemento (sin metal)	Asfalto
Cerámica (sin metal)	Hojas sueltas (sólo de enero a octubre)	

Eliminación de basura peligrosa de casa

La basura peligrosa de casa son productos que están presentes en la casa que son inflamables, corrosivos, venenosos o potencialmente peligrosos. Ejemplos incluyen:

Insecticidas	Adelgazadores de pintura
Lubricantes	Líquidos de limpieza
Fluido de frenos	Anticongelante
Químicos de jardín	Gas de automóviles

Tanques pequeños de gas Productos de pintura inflamables

Estos productos no deberían ser mezclados con basura no peligrosa. *La basura comercial o de negocios no es aceptada.*

La facilidad de basura peligrosa de casa está ubicada en la planta de contaminación de agua en 3402 S. Glebe Rd. Utilice la entrada de Fern St. a la izquierda. Sólo está abierta en días laborales previa cita. Llame al 703-228-6832 durante horas laborales para pedir una cita y para pedir consejo de cómo eliminar basura peligrosa de la casa. Las horas del día sábado son de 9 am–3 pm. No es necesario tener una cita para dejar materiales durante las horas del fin de semana; sin embargo, los ciudadanos deberían confirmar si sus materiales son aceptados antes de llegar a la facilidad.

AROUND YOUR NEIGHBORHOOD, CONT'D.

for activities, meetings, and outings. Call 703-920-3778 for more information.

Neighborhood Garden Tour Planned for June 12

A walking tour of gardens in the Douglas Park neighborhood will be held rain or shine on Sat., June 12, starting at 8:30am. Six different yards will be featured.



Attendees will meet at 8:15 am at the corner of Irving and S. 12 St., which is located between Highland and Glebe. This will be a great way to get new ideas and inspirations for your own yard and to meet fellow residents. Cost is only \$5 per person and the proceeds will be used to fund new plants and flowers to beautify the Douglas Park Neighborhood signs.

Please contact Mary Beth Rynders at 703-553-5539, or mbrynders@earthlink.net to make a reservation, which is suggested. Bring your sunscreen, bug spray, umbrella, and bottled drinking water for yourself, and a note pad and pen if you'd like to take notes. This is a walking tour so dress according to the weather and for comfort.

Attendees will meet at 8:15 am at the corner of Irving and S. 12 St., which is located between Highland and Glebe. This will be a great way to get new ideas and inspirations for your own yard and to meet fellow residents. Cost is only \$5 per person and the proceeds will be used to fund new plants and flowers to beautify the Douglas Park Neighborhood signs.

What Are Kids Doing?

Nam Dunbar, a seventh grader at Jefferson Middle School, finished fourth in the Virginia Challenge State Middle School Wrestling Championships held in Norfolk in Jan. Nam wrestled in the 95 lbs. weight class. In the double elimination format, Nam lost to the #1 seeded wrestler in the first round, then wrestled back beating his next six opponents only to face the same #1 seed in the consolation finals, where Nam lost a close 1-0 battle. The tournament is the largest of its kind in Virginia drawing more than 800 middle school wrestlers from across the state.

Why not tell us what your kids --or your pets-- have done lately? Send a brief paragraph to dpcanews@hotmail.com.

Be sure to include your phone number in case there are questions.

“There is NO PLACE LIKE HOME...”

Whether you rent or own, there is no better feeling than being at home. Call me or visit my web-site to learn more about what our robust real estate market has to offer You. I am a resident of the Douglas Park community and specialize in this market. Looking to rent, buy or sell? . . . Call me today for your free, no-obligation market analysis.



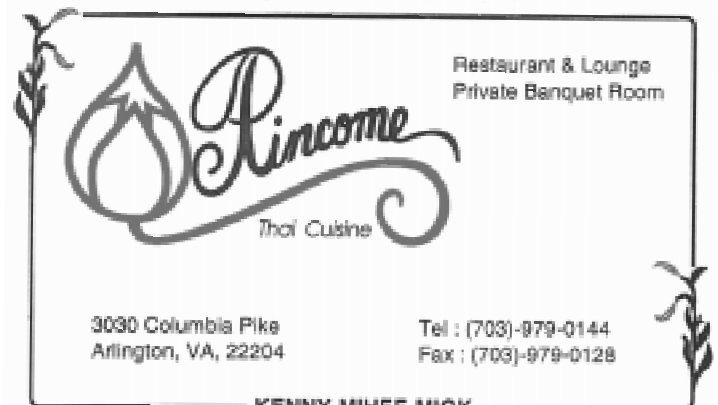
Keri O'Sullivan, ABR
“Putting Experience to Work”
Connect to the MLS:
www.keriosullivan.com
keriosullivan@remax.net
703-395-4099

RE/MAX Allegiance
3315 Lee Highway
Arlington, VA 22207



**Above
the
Crowd!**

A \$25 Contribution is made to the American Cancer Society in every client's name on all transactions



Serving Douglas Park for 19 years

Providing the community with a quality
Christian education for over 50 years.

Our Savior Lutheran School

825 S. Taylor Street

Arlington, VA 22204 (703)892-4846

Kindergarten through 8th grade

Small classes
Caring teachers
New facilities

Fully accredited
Close to home
Affordable

COLUMBIA PIKE DEVELOPMENT PLANS

Major Development Proposed for Arlington Hardware and Adjacent Sites

The Georgelas Group of McLean has submitted the first major development proposal for Columbia Pike issuing from the three-year long Columbia Pike planning process. The project is a condominium building consisting of 257 units with retail storefronts on the first and possibly second levels. The total project contains about 450 underground parking spaces, divided among building residents, retail users and the general public. The project contains space for the Arlington Free Clinic and the developers will provide a temporary site for the clinic during construction. The space being developed for the clinic in the new building will be deeded outright to the clinic at completion.

Where will all this fit? The site consists of the Hardware store property, the free clinic building, the parking lot behind the clinic and the VA power substation. It totals more than



Architect's rendering of Blanca's Restaurant at Columbia Pike and Walter Reed with housing set back behind it. The design would include the front of the current hardware store.

an acre and a half. The building fronts on Columbia Pike, Walter Reed and 11th Street. Blanca's restaurant, on the corner, is not part of the development proposal and will basically remain as is.

How tall? The building tops out at eight stories. Half of the building facing 11th Street will be six stories tall. The front 15 feet of the facades of the Hardware Store and the free clinic will be retained (The clinic frontage will be redesigned; the Hardware store and Blanca's are historic properties, built in 1920.) The new building will be start behind this frontage. With the other small buildings fronting the Pike, the effect from the corner will be to have three steps up, of one (Blanca's), two (Hardware Store) and three stories (clinic). The bulk of the new development will begin behind these fronts, 15 feet back.

Illustrative boards are on display at CPRO (2611 Columbia Pike, 703-892-8992). The project will be reviewed by the planning committee on May 3, and by the county board on May 15. A community meeting is tentatively set for April 26. Call CPRO to confirm time and place.

Townhouses to Break Ground Soon

The Alcova Row townhouse project on Columbia Pike between Quincy and Randolph should break ground soon. The project was approved in May of 2003, and after clearing a number of additional hurdles, is ready to proceed. The project consists of 22 townhouses. All of the units will be built at street level on the Pike and Randolph, eliminating the need for street-front retaining walls, and utilities will be placed underground. Full sidewalks and planting strips will be built, increasing pedestrian safety, and a parking lane along the Pike will also be built.

Planning on selling your home? Want to know what it is worth?

Visit our web site and fill out a request for a *FREE*, "online market analysis", or call us for an *in person* no obligation market analysis.

Contact us a special report "44 Money-Making Tips for Preparing Your Home to Sell"

We'll sell your home in 19 days, or we'll sell it for FREE . . . Guaranteed!

For details call our 24 hour recorded message line at 1-800-523-6054 ext. 1024

Curious about what is currently for sale?

Visit our web sites . . . Do your own personal search and preview ALL active listings. We can show you any home listed by any real estate company, including new homes! Protect your interests by hiring a professional when buying your next home!

Casey O'Neal/Judi Finney Team

RE/MAX Allegiance

(Office) 703-824-4800 (Direct) 703-824-4196

AROUND ARLINGTON

Volunteers Sought for Arlington County Fair

Volunteers are welcome to assist with the 28th annual Arlington County Fair, to be held August 19-22 at Thomas Jefferson Community Center. Volunteers will assist with set-up, execution, and breakdown of the fair in three-hour shifts. Adult and teen volunteers are invited; teens must be accompanied by an adult. For information on volunteering, call Denise Marshall Roller at 703-228-3289, or see the Web site at www.arlingtoncountyfair.org

The Arlington County Fair also is seeking applications from prospective new board members. For information, call Dick Durland at (703) 536-6458.

Ballston Arts Market Opens

The Ballston-Virginia Square Partnership and the Arlington Co. Cultural Affairs Div. inaugurated the First Saturdays Art Market on April 3, a juried monthly outdoor market featuring the exhibition and sale of original handmade art and crafts items by approximately 20 area artists. It will be held the first Sat. of the month from 10 am-4 pm, through October. It is located at Wellburn Square, between N. Stuart and Taylor Sts, Wilson Blvd. and Fairfax Dr. 703-528-3527.

Historic Ball-Sellers Home Open for Season

Arlington's oldest dwelling, and now a museum operated by the Arlington Historical Society, is open on Saturdays, 1-4 pm through Oct. 30. Admission is free. John Ball built the home around 1750. The simple log cabin is one of the few surviving examples of homes lived in by ordinary Virginians during the colonial period. Historical displays and typical furnishings of the period are presented in the house.

The Ball-Sellers House is located at 5620 S. 3rd St. Parking is available at the Glen Carlyn Library, located at the corner of S. Kensington Street and 3rd St. www.arlingtonhistoricalsociety.org

"Thanks for alerting us to this amazing old structure. Four residents of London Square ventured over there this afternoon, and visited the lovely old neighborhood library as well. The Ball House is a very small, plain, two-room structure with a loft, built by a farmer of modest means in the mid-1700's. He, his wife, and their five daughters lived in it. After his death in 1766, it was in the Carlin family for 100 years. It's absolutely unbelievable that such an ancient wooden house can still exist. You can't really see it driving by--going into it and seeing the yard and ancient wisteria is an interesting surprise tucked away in a lovely neighborhood!"

--Evalyn Carter

New Bakery Opens on the Pike-- Casa Blanca

Casa Blanca Bakery and Cafe, 5037 Columbia Pike, located in the old Murry's Steaks location has breads and pastries, along with traditional Mexican and Salvadorian food in the Café: tamales, empanadas, yucca, breakfast foods (eggs, pancakes, etc.) There are tables if you want to eat there, too.

Car Sharing in Arlington-- Incentive Offered in April

Car sharing is a short-term car rental for as little as a half-hour, simply by registering and reserving online. Two companies, Flexcar, www.flexcar.com, and Zipcar, www.zipcar.com, provide car sharing services in Arlington Co. Anyone who lives or works in Arlington Co. can join Zipcar now for a discount, with credit toward the first two months. To take advantage of this offer, enter "Arlington County" in the promo code field of the application at www.zipcar.com.arlington.

Zipcar, Flexcar, and Arlington Co. Commuter Services (sponsor of CommuterPage.com) are providing these incentives to carshare through April 30, 2004. Download a map at www.commuterpage.com/atp/pdfdocs/arlcshare1page.pdf of cars available in Arlington's Rosslyn-Ballston corridor. > 10

LAW OFFICES OF

Ronald M. Cohen & Associates, P.C.

2300 South 9th Street, Suite 112
Arlington, Virginia 22204

(703) 685-3680

(one block off Columbia Pike)

Civil Litigation

Debt Collection

Criminal & Traffic

Accidents/Serious Injury

(no fee if no recovery)

Divorce & Child Support

Real Estate Issues

Real Estate Settlements

& Refinance

Wills/Estate Planning

Over 25 Years of Experience

AROUND ARLINGTON, CONT'D

New Service: Red Cross to Provide Free Spanish Translation to Community

The Arlington chapter of the Red Cross is happy to announce the launch of a new Spanish desk, designed to facilitate Red Cross services to Arlington's Spanish-speaking population and provide a Spanish language translation service to the Arlington community. Located at the Arlington Chapter, 4333 Arlington Blvd, the desk is staffed by Spanish-speaking Red Cross volunteers hailing from five different countries.

"I think this service is very important because it will help us understand each other in both directions," said Claudia White, founder of the Spanish desk and a native of Colombia. "It's important for the Spanish-speaking population to learn to communicate in English, but it's also helpful for English speakers to learn to communicate with their neighbors."

The desk will provide translations of documents from Spanish to English or English to Spanish, and will assist Spanish speakers with accessing the Red Cross programs and services available to them like health & safety training, disaster relief, eldercare transportation, and international messaging and tracing.

The Spanish desk will be open Mondays, Tuesdays, and Wednesdays, 6–8 pm. All volunteers are bilingual professionals who have committed at least one hour a week to this

initiative. Those interested in volunteering or using this service should contact the Spanish desk: 703- 527-3010, ext. 790, or spanishdesk@arlingtonredcross.org.

"This is just the beginning of our international outreach," said Ms. White, "Arlington is one of the most diverse regions in the nation. According to the latest census survey, one in four residents was born outside of the U.S. and one in three speaks a language other than English at home. In the future, we plan to expand the Spanish desk into a 'language desk' in an effort to reach the rest of the community."

—*Jenny C. Brennan, Public Support Coordinator, Arlington Red Cross, 703-527-3010, x 732. www.arlingtonredcross.org*

Water Stewardship Program Forms Teams

Do you know where your drinking water comes from, or where the water spiraling down the drain in your sink goes? How about the water that runs off your driveway? Although water is critical to our survival, many people do not know much about the water they use. We all live in a "watershed," which consists of the land surface that drains into a local water body, such as a stream, river, or lake. Our behavior impacts these local water bodies, and it is our responsibility to protect water quality and improve our local watershed.

In 2003, an exciting water stewardship pilot program took place in the Four Mile Run Watershed in Northern Virginia. Arlingtonians for a Clean Environment (ACE), in partnership with Arlington County, Falls Church, and Alexandria, and Empowerment Institute, developed and implemented the Livable Neighborhood Water Stewardship Program.

In this program, volunteers recruit their neighbors to form a team, and then team members work together to become better water stewards. A workbook with a menu of carefully crafted actions is available to guide the neighborhood groups. All the actions in the workbook are designed to foster water-friendly lifestyles, with three topic areas: water quality, water conservation, and community involvement. The program consists of an initial informational meeting, followed by three program meetings over a two-to-three month period.

ACE and their partners applied for and received additional funding to expand the watershed stewardship team program in 2004. We are currently looking for team leaders. A representative of the program from Arlington Co. or ACE can speak to your group about protecting water quality, and give you more information about this program and how it works. EPA is interested in doing a national pilot of this program across the country, so we could be a pilot city in their program.

The next training for team leaders will take place on Sun., June 6. For details: Aileen Winkvist, Arlington Co., 703-228-3610, awinkvist@arlingtonva.us or Elenor Hodges, ACE, 703-228-6427, elenor@arlingtonenvironment.org. <http://www.co.arlington.va.us/des/epo/volunteer.htm> <http://www.arlingtonenvironment.org/getinvolved.htm>

SOLD

5704 Chapin Avenue

Alexandria, Virginia

Priced way too high at **\$335,000**
but in very good condition

Sold price: \$337,000

with **no seller help of money.**

Home inspection and termite repair were waived

How did I do it?

- **3 OPEN HOUSES (agents usually do 1)**
- **I called agents back repeatedly**
- **I showed the house constantly**
- **I advised seller prior to putting on market – what to fix, what to expect, etc.**
- **I negotiated hard – there were 6 contracts written on it**

Carole Skole

RE/MAX Allegiance

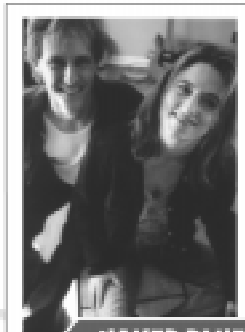
(703)-684-8034

*Call me for your
free market analysis*

Sunday May 2, 2004 Noon-6pm

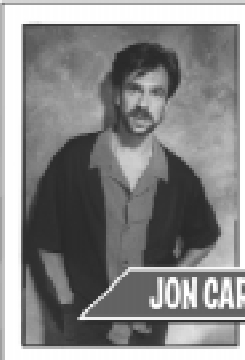
Free Admission

Columbia Pike and Walter Reed Drive, Arlington, Virginia



NAKED BLUE

DEANNA BOGART



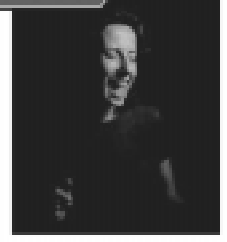
JON CARROLL

9th Annual

Columbia Pike BLUES FESTIVAL

Presented by 

BARBARA MARTIN



JEFF SMITH & HIS BAND OF STEVES



STEVE MCWILLIAMS

Crafts Great Food Hands-on Art Bike Registration Instrument Petting Farm

Take Metro to the festival!

Metrobus 16 Route will be free all day, courtesy of ART - Arlington Transit. Get off at the Pentagon Metrorail Station and catch the 16 bus up the Pike to Walter Reed Drive.

Days Inn Pentagon - Official Blues Festival Hotel - 703-521-5570

Columbia Pike Blues Festival is sponsored by:

The Blues Water Foundation • The Washington Forrest Foundation • ART - Arlington Transit
First Virginia Bank • Rosenthal Automotive • Ski Chalet • State Farm Insurance

Visit the Farmers Market, 10am - 2pm

Sponsored by the Columbia Pike Revitalization Organization - 703-892-2776
cpri1@comcast.net - <http://www.columbiapikepartnership.com>



Ward Pest Control, Inc.

5547 Lee Highway
Arlington, VA 22207
703-532-3506

Serving the D.C. Metropolitan area for 30 years, we offer a full range of residential pest control services, including termite treatments, warranties, and wildlife management. Consumer groups rates us as one of the top firms for quality of service and pricing.



Arlington
presbyterian church

703-920-5660 www.arlingtonpresbyterian.org
3507 Columbia Pike at Lincoln Street



The Mike Webb Team, LLC



Buy or Sell one house through the Mike Webb team, LLC
& have access to This Truck, for life

For more information, please call us at 703-979-3016



If you are considering selling your home, or would just like to know the current market value, Please do not hesitate to call me for a free, no obligation market analysis.

If your property has been listed for sale with another broker, this is not intended as a solicitation of that listing.
Printed in the U. S. A. Postal Mailing Solution 1-888-832-8178

Thank you!

The Douglas Park Civic Association thanks the Mike Webb Team for their generous gift to defray the cost of printing Neighbor News.



The Mike Webb Team LLC • 703-979-3016 • <http://northernvirginiahouses.com>