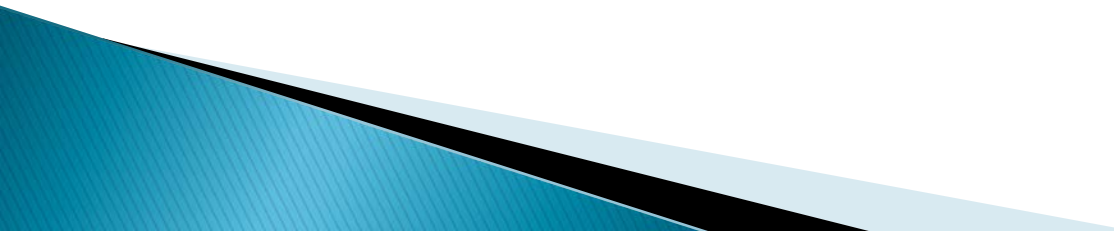


The Future of South Arlington Schools and the Capital Improvement Plan

By Monique O'Grady
APS Parent

What to Expect in this Presentation

- ▶ My own interpretation of APS data
 - ▶ APS Information about the 2012 Bond
 - ▶ Short term and long term APS projections
 - ▶ Encourage Arlingtonians to speak up
 - ▶ Decision on moving forward can be inclusive
- 

APS' 2012 Bond Plan

Why is APS building so much new space for elementary students?



2012 School Bond

FAQ
Information

On Election Day, November 6, Arlington voters will be asked to approve \$42.6 million in school bonds to address growing capacity needs. Here are answers to some Frequently Asked Questions about the 2012 School Bond.

How will the 2012 school bonds be used?

The 2012 school bonds will be used to add seats for elementary capacity and to make needed improvements to school system infrastructure. Total bond funding of \$42.6 million will be divided among:

- Design funds for additions at Arlington Traditional School (\$1.6 million) and McKinley Elementary (\$1.6 million)
- Design funds for a new elementary school at the Carlin Springs/Kenmore site (\$4.5 million)
- Construction funds for a new elementary school at the Williamsburg site (\$28.1 million)
- HVAC and roofing improvements at schools throughout the county (\$6.8 million)

In addition to bond funding, the design & construction of an addition at Ashlawn Elementary (\$14.9 million) and the design and partial construction of the new elementary school at Williamsburg (\$4.0 million) will be paid for from current reserves.



APS' greatest immediate need for space is at the elementary level. In the past five years, the number of APS elementary students has grown by 28% resulting in overcrowding in two-thirds of our elementary schools. Projections show this trend continuing for the coming years.

* APS 2012 School Bond FAQ document

APS' 2012 Bond Plan

How were the five projects and locations for adding elementary space selected?

The projects and locations were selected through a yearlong planning process that engaged the School Board, community stakeholders and staff in prioritized decision-making based on the APS 2011–2017 Strategic Plan. Since the majority of APS' elementary schools are overcrowded and the bulk of student enrollment growth is at the elementary level, the 2013–22 CIP process focused on elementary schools.



2012 School Bond

FAQ
Information

On Election Day, November 6, Arlington voters will be asked to approve \$42.6 million in school bonds to address growing capacity needs. Here are answers to some Frequently Asked Questions about the 2012 School Bond.

How will the 2012 school bonds be used?

The 2012 school bonds will be used to add seats for elementary capacity and to make needed improvements to school system infrastructure. Total bond funding of \$42.6 million will be divided among:

- Design funds for additions at Arlington Traditional School (\$1.6 million) and McKinley Elementary (\$1.6 million)
- Design funds for a new elementary school at the Carlin Springs/Kenmore site (\$4.5 million)
- Construction funds for a new elementary school at the Williamsburg site (\$28.1 million)
- HVAC and roofing improvements at schools throughout the county (\$6.8 million)

In addition to bond funding, the design & construction of an addition at Ashlawn Elementary (\$14.9 million) and the design and partial construction of the new elementary school at Williamsburg (\$4.0 million) will be paid for from current reserves.

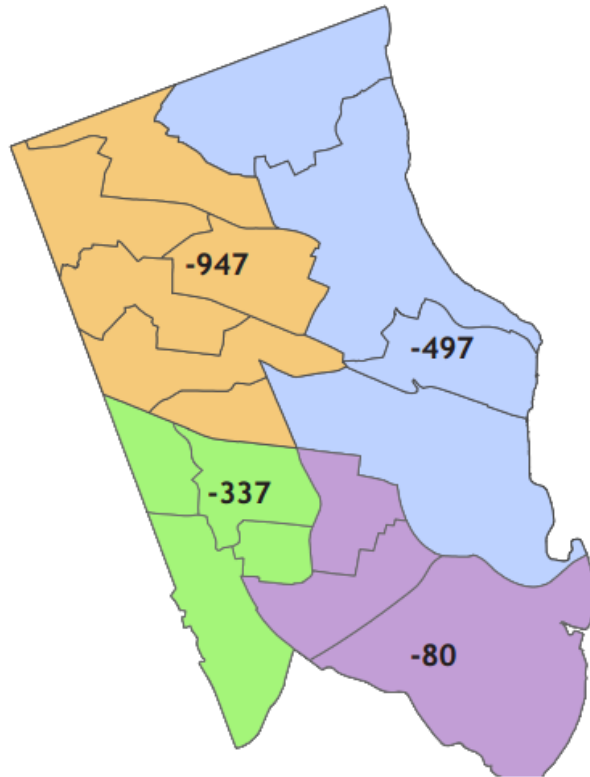


* APS 2012 School Bond FAQ document

APS' 2012 Bond Plan Result

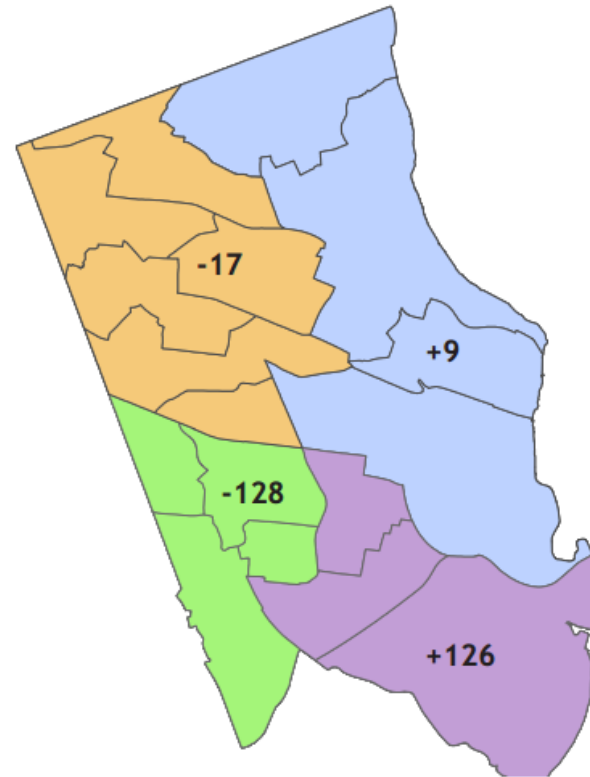
PROJECTED 2017 ELEMENTARY SEAT DEFICITS WITH AND WITHOUT EXPANSION PROJECTS

Projected 2017 elementary seat deficit with no additional seats



Before

Projected 2017 elementary seat surplus/deficit with 1875 new seats



After

* APS 2012 School Bond FAQ document

The APS 2012 Bond Plan = 1875 New Elementary Seats

Four North Arlington projects and one South Arlington project

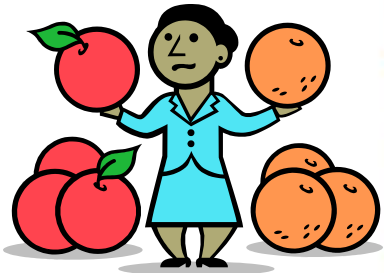
- ▶ Ashlawn Addition – Fall 2014 ✓
- ▶ New Elementary School at Williamsburg site – Fall 2015 ✓
- ▶ Arlington Traditional School Addition – Fall 2016 ✓
- ▶ McKinley Addition – Fall 2016 ✓
- ▶ New Elementary School at Carlin Springs/Kenmore site – Fall 2017 ?

APS Reconsidering the 600 seat South Arlington Choice Elementary School

- ▶ By FY 2019, elementary schools will have a **470-seat shortage countywide**, which is 3% of all elementary seats.
- ▶ By FY 2019, middle schools will have a shortage of **960 seats countywide**, which is 16% of all middle school seats.
- ▶ By FY 2024, APS projects a **6% shortage in elementary seats and a 24% shortage in middle school seats.**

* Chair Raphael's 1/16/14 letter to parents

Seat Deficiencies with Elem. Trailers



Seat Deficiencies

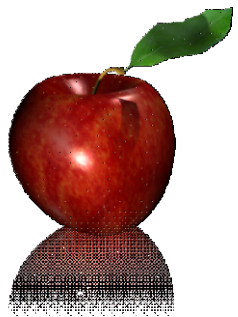
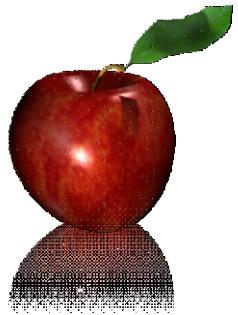
		Relocatables Number	Capacity Seats	Enrollment Students	Delta Seats	Delta %
FY 2014	Elementary	96	12,710	12,710	0	0%
	Middle	13	5,065	4,676	389	8%
	High	12	6,080	5,847	233	4%
FY 2019	Elementary	96	14,015	14,485	-470	-3%
	Middle	13	5,065	6,025	-960	-16%
	High	12	6,080	6,886	-806	-12%
FY 2024	Elementary	96	14,015	14,982	-967	-6%
	Middle	13	5,065	6,655	-1,590	-24%
	High	12	6,080	8,858	-2,778	-31%

MORE Seats for Students

11

* APS School Bond Work Session PowerPoint 12/2/13
Trailer capacity not included in Middle/High

Seat Count Without South Arlington Elementary School or Elem. Trailers



Seat Deficiencies						
		Relocatables Number	Building Capacity	Enrollment Students	Seats	Delta %
FY 2014	Elementary	96	12,036	12,710	-674	-6%
	Middle	13	5,065	4,676	389	8%
	High	12	6,080	5,847	233	4%
FY 2019	Elementary	96	13,341	14,485	-1,144	-9%
	Middle	13	5,065	6,025	-960	-19%
	High	12	6,080	6,886	-806	-13%
FY 2024	Elementary	96	13,341	14,982	-1,641	-12%
	Middle	13	5,065	6,655	-1,590	-31%
	High	12	6,080	8,858	-2,778	-46%

MORE Seats for Students

***Note:**
Building capacity does not include trailers.

* APS 2014 Stakeholder Meeting 2 PowerPoint

Elementary Projections with North Arlington Additions & New School

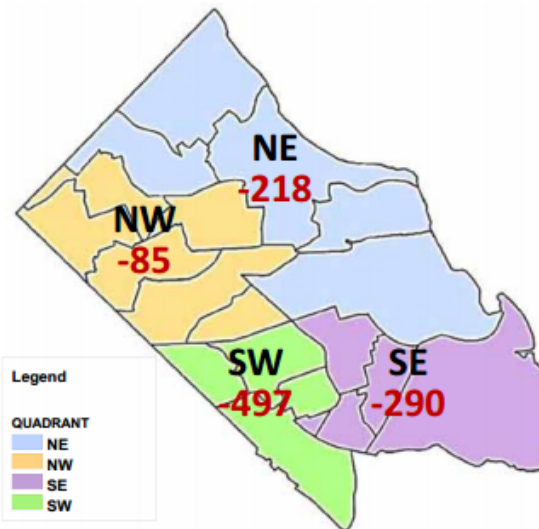
Elementary School Seat Deficits

South
Arlington

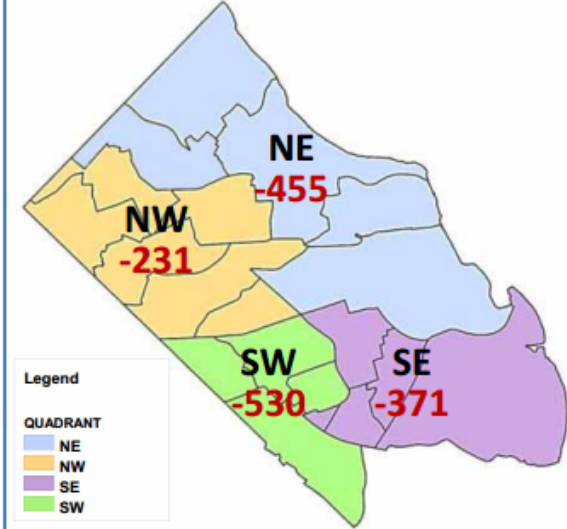
2019
-787 Seats

2024
-901 Seats

Projected **2018/2019**



Projected **2023/2024**



Notes:

1. Seat deficit equals Building Capacity in each quadrant, excluding relocatables, minus projected enrollment.
2. Peer models and dual enrolled students not included (54 students at Reed).
3. Includes planned capacity at New Elementary, ATS, McKinley and Ashlawn.

10

* APS Open Community Forum PowerPoint 2/5/14

Petition with 650 Signatures

- ▶ “All of Arlington requires good schools. Please ... don't ignore South Arlington kids.”
- ▶ “This is kind of like bait and switch.”
- ▶ “The school board must not think it's ok to plan for double-digit overcapacity in south Arlington to alleviate single-digit overcapacity in north Arlington.”

change.org

Start a petition Browse

Search

Log in



🔒 Petition Closed

with 650 supporters

650 signature

Supporters are signing:



**CA Attorney General
Kamala Harris:**
Investigate UCLA for
ignoring
discrimination and
retaliation complaints
by faculty members


New South Arlington Options

Second New Elementary School

School Board decision to reevaluate means:

- School may be built on Kenmore/Carlin Springs site.
- School may be built on another site south of Arlington Boulevard.
- School may be choice or neighborhood.
- One or more additions may be built south of Arlington Boulevard instead of the new school.
- The 2017 completion date for new elementary seats south of Arlington Boulevard may be adjusted.

What You Can Do

- ▶ Engage your neighbors / community
 - ▶ Write the School Board / County Board
 - ▶ Attend School Board Meetings (SPEAK OUT)
Wed, Feb. 19 from 7–9 p.m.
Jefferson Middle School Theater
 - ▶ Consider asking the School Board to use creative solutions to solve approaching middle school and high school crunch and build a South Arlington Choice School
- 

▶ Questions?

- ▶ Monique O'Grady
- ▶ mogradeeva@gmail.com